

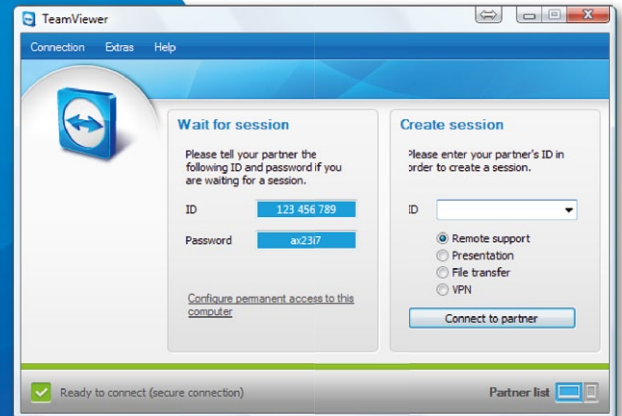


TeamViewer – Spontaneous Support

You would like to give spontaneous support?
We show you how to do it in just 3 steps.

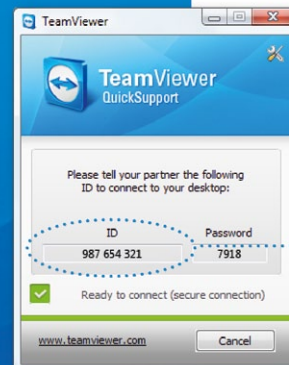
1 What you do

Download TeamViewer on your computer. In order to control a remote computer, you need the **full version**. Install it by simply following the instructions of the setup routine and eventually start TeamViewer.



2 What your partner does

Ask your partner to download and run the customer module, TeamViewer QuickSupport.



<http://www.teamviewer.com/download/TeamViewerQS.exe>

3 Establish a connection

Ask for your partner's TeamViewer ID (see picture in step 2). Enter it in the field "ID". Click on "Connect to partner" and enter your partner's password in the following dialog box in order to establish a connection.

